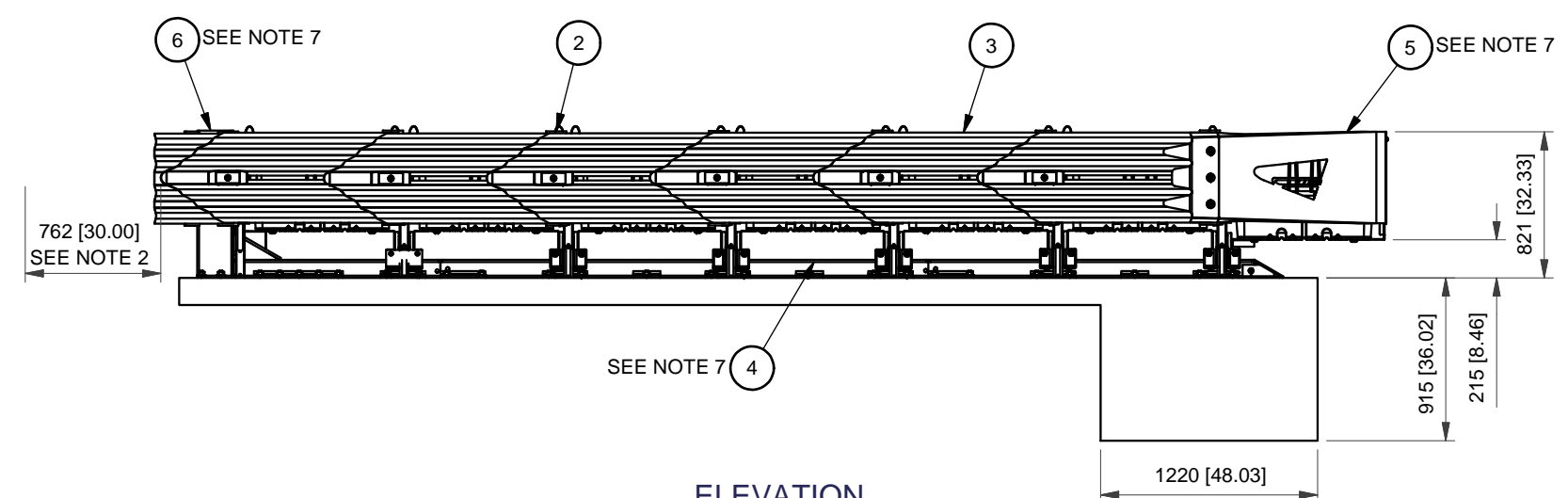


PLAN



ELEVATION  
LEFT SIDE

- NOTES:
1. IN COMPLIANCE WITH THE AASHTO 2006 ROADSIDE DESIGN GUIDE, MANUFACTURER RECOMMENDS REMOVAL OF ALL CURBS AND ISLANDS TO ENSURE PROPER IMPACT PERFORMANCE.
  2. PROVISION SHALL BE MADE FOR REAR FENDER PANELS TO SLIDE REARWARD UPON IMPACT 762 [30.00] MIN.
  3. 150 [6.00] MIN. REINFORCED 28 MPa [4000 PSI] P.C. CONCRETE PAD OR 200 [8.00] MIN. NON-REINFORCED 28 MPa [4000 PSI] P.C. CONCRETE ROADWAY, MEASURING AT LEAST 3.66 m [12'-0"] WIDE BY 15.24 m [50'-0"] LONG.
  4. SEE THE "QUADGUARD M10 SYSTEM PRODUCT MANUAL" FOR A DESCRIPTION OF ITS IMPACT PERFORMANCE CHARACTERISTICS AND DESIGN LIMITATIONS BEFORE PLACING A SYSTEM AT A GIVEN SITE. INFORMATION AND COPIES OF ABOVE MANUAL ARE AVAILABLE BY CALLING CUSTOMER SERVICE DEPARTMENT AT (888) 323-6374.
  5. WHERE NECESSARY, THE CUSTOMER SHALL SUPPLY AN ADEQUATE TRANSITION FROM THE QUADGUARD M10 SYSTEM TO THE OBJECT BEING SHIELDED.
  6. UNITS OF MEASUREMENT ARE MILLIMETERS [INCHES] UNLESS OTHERWISE NOTED.
  7. BACKUP, MONORAIL, AND NOSE ASSEMBLIES ARE NOT INCLUDED IN MODEL NUMBER, ORDER SEPARATELY.
  8. THE QUADGUARD M10 HAS BEEN TESTED TO MASH.
  9. TENSION STRUT SHOWN. ALSO AVAILABLE WITH A CONCRETE BACKUP.

BAYS	1753 [69"] WIDTH	2286 [90"] WIDTH	MAX DESIGN SPEED	NO. OF CARTRIDGES
**	MODEL #	MODEL #	Km/h [MPH]	TYPE M-I   TYPE M-II
6	QM10569	QM10590	105 [65]	4   3

Revision	Date	Rev	By	Chk.	App.

REFERENCES

SERIAL NO.	DIAPHRAGM ASSY.	3540340-0000
SALES ORDER	SHIM KIT, DIAPHRAGM	3540078-0000
EH PROJECT	NOSE ASSY.	617386
NO. OF UNITS	FENDER PANEL ASSY.	35-40-04
	BACKUP ASSY.	3540390-0000
	MONORAIL ASSY.	35-40-75
	CONCRETE PAD	35-40-76

DRAWN:	D. Standridge	DATE:	4/21/2010
DESIGNED:	S. Thompson	DATE:	12/15/2009
CHECKED:		DATE:	
APPROVED:		DATE:	
FILE:	QFMTSCVR-U.idw		



QUADGUARD M10 SYSTEM  
WIDE SYSTEM WITH TENSION STRUT BACKUP